

Medical Grade Touchmonitor

IEC60601-1-2:2014/A1:2020

EN 60601-1-2:2015/A1:2021



15.6 inch **MEDICAL TOUCHMONITOR**

General Touch's Medical-Grade Series Touchmonitor incorporates GT's excellent touch technology, are designed from the ground up with medical professionals in mind.

KEY FEATURES

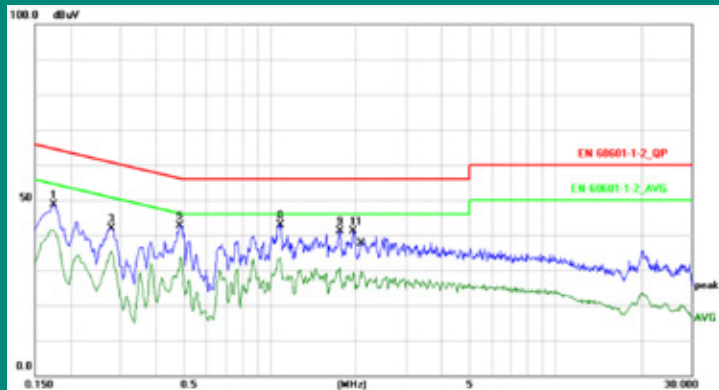
- Medical-grade material
- Anti-glare glass and Anti-corrosion coated metal frame
- Various mounting options
- MTBF 50,000hrs
- IEC/EN60601-1-2 Certificates
- General Touch's PCAP Touchscreen, more confidence
- Low power consumption save energy
- 3-year warranty



IEC60601-1-2:2014/A1:2020

EN 60601-1-2:2015/A1:2021

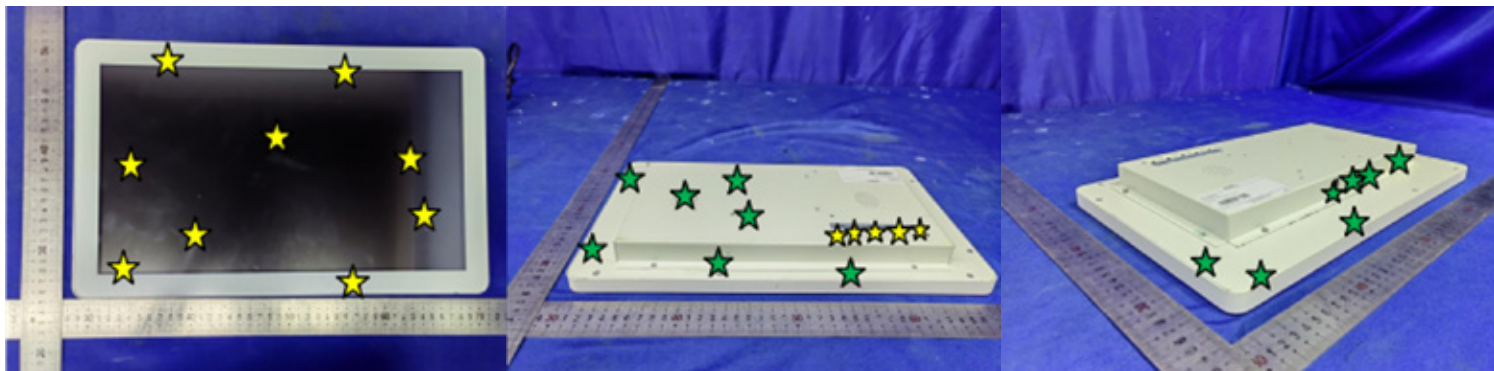
Using medical-grade materials in product selection, certified to IEC60601-1-2 and EN60601-1-2 standards, these touchmonitors offer reliable electromagnetic interference immunity and safety for healthcare environments.



Safety is highly rated in GT's medical touchmonitor where the electrostatic discharge is concerned, electrostatic will be good and smoothly bear by 15.6 inch medical touchmonitor at a high level.

Electrostatic Discharge level 4

8kV Contact Discharge 15kV Air Discharge



★ Air Discharge point ★ Contact Discharge point

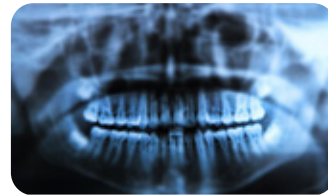
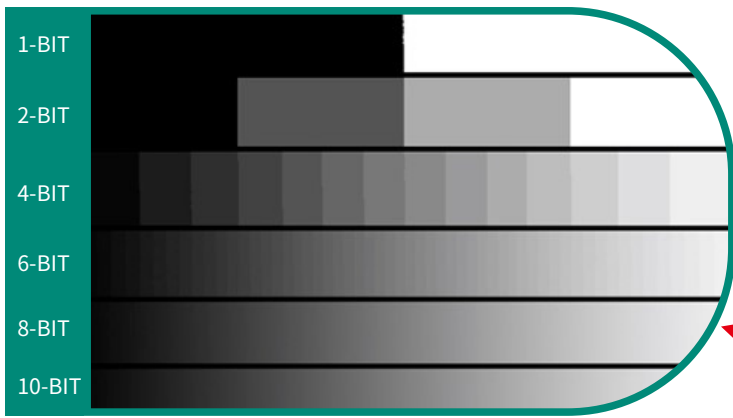


16.7M
Color Depth

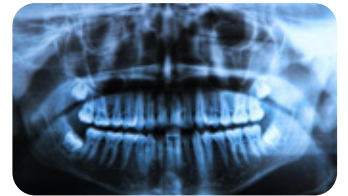


400nits
Brightness

15.6 inch Medical Touchmonitor delivers ultimate readability and clarity to medical inspection equipment, dentist operation machine, doctor's monitors, clinic deployments. Its 400nits brightness and 16.7M color depth offers flexibility and consistent high-quality visibility that will complement well with all applications.



Bad color quality

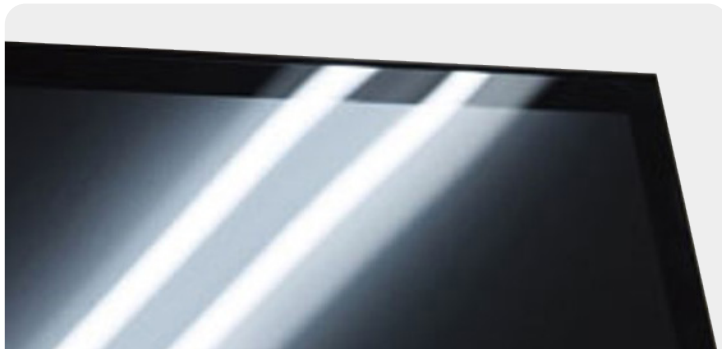


Better color quality

16.7M Color Depth:

8-bits per color channel: 28 = 256 gray values

Total colors: (256R) x (256G) x (256B) = 16.7 million colors



Anti-glare PCAP touchscreen Powered by General Touch, with IK07 Impact resistance provide flawless touch encounters and comfortable viewing experience.



Types of Anti-Corrosive Pigments:
Safeguarding Surfaces with Innovation

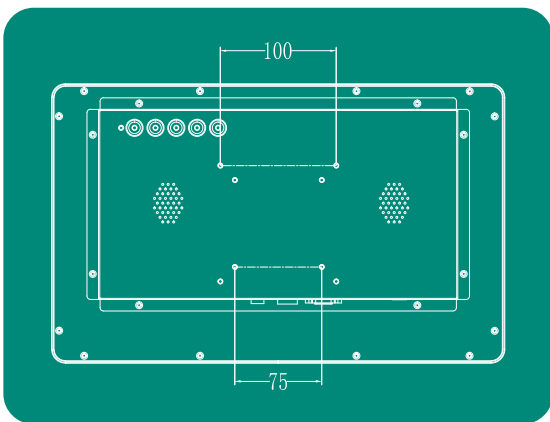
www.generaltouch.com

The anti-corrosion coated metal exterior can withstand regular disinfection procedures, keeping monitors in tip-top shape around hospital cleanliness protocols.

This closed frame with a modern and compact design comes with various mounting options that will easily adapt to diverse medical settings.

Speaker, 2X 2W

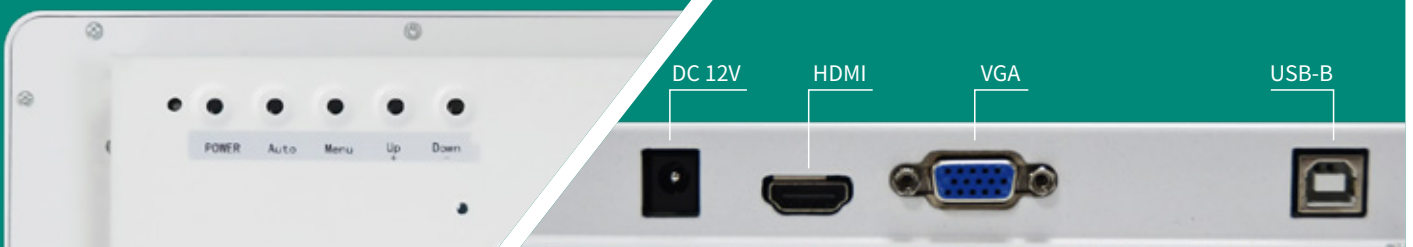
Enhance your medical scenarios with displays that offer vivid, friendly voice capabilities. Enjoy the convenience of built-in speakers and transparent audio signals via HDMI cable for a simple, seamless experience.



Check out the following drawings. VESA holes (100*100mm or 75*75mm) offer various mounting configurations: On a stand, on an ergonomic manipulator arm, on the wall or floating mount (outside of a machine).

The OSD (On-Screen Display) offers configurability to seamlessly adjust to different deployment environments.

Flexible Interface
Dual video interface: VGA, HDMI
Touch interface: USB-B



15.6 inch Medical Grade Touchmonitor

More details about industrial production, please visit our website: www.generaltouch.com



Datasheet Download



Drawing Download