

# Medical Grade Touchmonitor

IEC60601-1-2:2014/A1:2020

EN 60601-1-2:2015/A1:2021



## MEDICAL TOUCHMONITOR

General Touch's Medical-Grade Series Touchmonitor incorporates GT's excellent touch technology, are designed from the ground up with medical professionals in mind.

### KEY FEATURES

- Medical-grade material
- Anti-glare glass and Anti-corrosion coated metal frame
- Various mounting options
- MTBF 50,000hrs
- IEC/EN60601-1-2 Certificates
- General Touch's PCAP Touchscreen, more confidence
- Low power consumption save energy
- 3-year warranty

IEC60601-1-2:2014/A1:2020

EN 60601-1-2:2015/A1:2021

### Verification of Conformity

Registration

Applicant : General Touch  
Address : 3rd Floor, Building 1, No 6, Keyuan S Road, High-Tech Zone, Chengdu, Sichuan, China

Manufacturer : General Touch  
Address : 3rd Floor, Building 1, No 6, Keyuan S Road, High-Tech Zone, Chengdu, Sichuan, China

Factory Address : General Touch  
Address : 3rd Floor, Building 1, No 6, Keyuan S Road, High-Tech Zone, Chengdu, Sichuan, China

E.U.T. : 21.5" Monitor

Brand Name : General Touch

Model No. : XXX22X, XXX

Test Report No. : SZNTC24031

Standard : IEC 60601-1-2:2014/A1:2020  
EN 60601-1-2:2015/A1:2021

Shenzhen Nore Testing Center Co., Ltd.  
South, No. 1, Building 10, Maqueiling Industrial Zone, Nanshan Shenzhen, Guangdong, 518057, China  
TEL: +86-755-33523266 Web: www.ntc-c.com

**CERTIFICATE OF CONFORMITY**

Certificate No.: SZNTC2310114EV00

Applicant : General Touch Co., Ltd.  
Address : 3rd Floor, Building 1, No 6, Keyuan S Road, High-Tech Zone, Chengdu, Sichuan, China.

Manufacturer : General Touch Co., Ltd.  
Address : 3rd Floor, Building 1, No 6, Keyuan S Road, High-Tech Zone, Chengdu, Sichuan, China.

Factory Address : General Touch Co., Ltd.  
Address : 3rd Floor, Building 1, No 6, Keyuan S Road, High-Tech Zone, Chengdu, Sichuan, China.

E.U.T. : 15.6" Monitor/ 15.6" Touch Monitor

Brand Name : General Touch

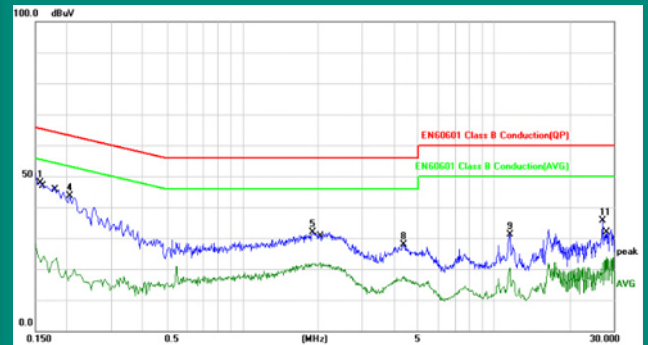
Model No. : XXX15X, XXX15X-LXXXX ("X"=0-9, A-Z, - or blank)

Test Report No. : SZNTC2310114EV00

Standard : IEC 60601-1-2: 2014/A1: 2020  
EN 60601-1-2: 2015/A1: 2021

The certificate of conformity is based on an evaluation of a sample of the above mentioned product. Technical report and documentation are at the applicant's disposal. The certificate does not imply assessment of the production and does not permit the use of Lab's logo.

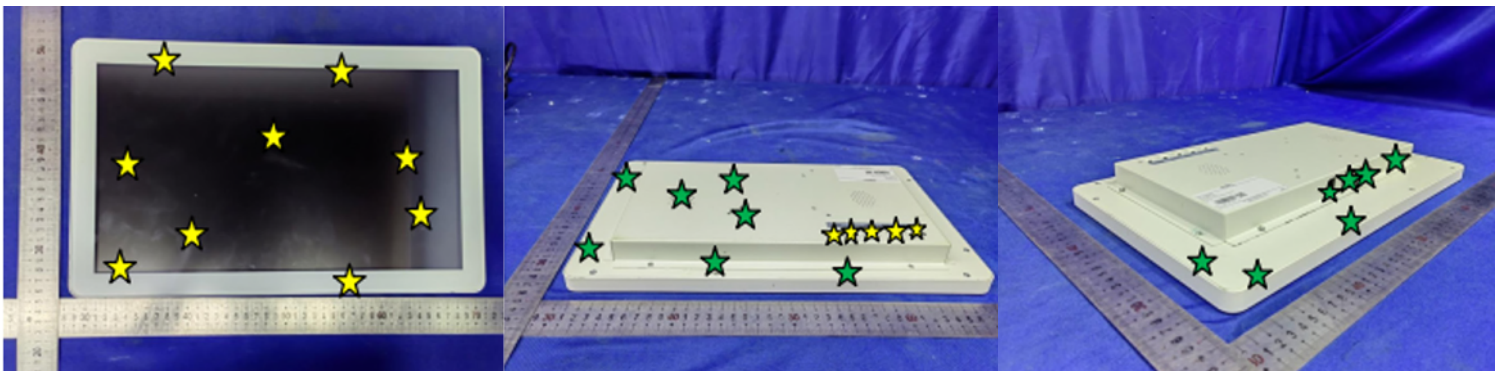
Using medical-grade materials in product selection, certified to IEC60601-1-2 and EN60601-1-2 standards, these touchmonitors offer reliable electromagnetic interference immunity and safety for healthcare environments.



Safety is highly rated in GT's medical touchmonitor where the electrostatic discharge is concerned, electrostatic will be good and smoothly bear by GT medical touchmonitor at a high level.

#### Electrostatic Discharge level 4

8kV Contact Discharge      15kV Air Discharge



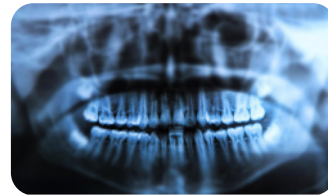
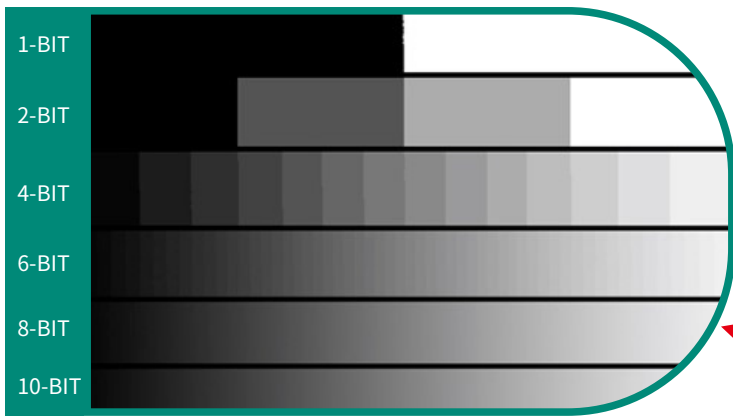
★ Air Discharge point      ★ Contact Discharge point



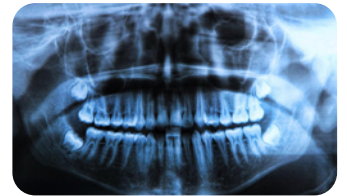
**16.7M**  
Color Depth

**400nits**  
Brightness

GT Medical Touchmonitor delivers ultimate readability and clarity to medical inspection equipment, dentist operation machine, doctor's monitors, clinic deployments. Its 400nits (21.5" with 250nits) brightness and 16.7M color depth offers flexibility and consistent high-quality visibility that will complement well with all applications.



Bad color quality

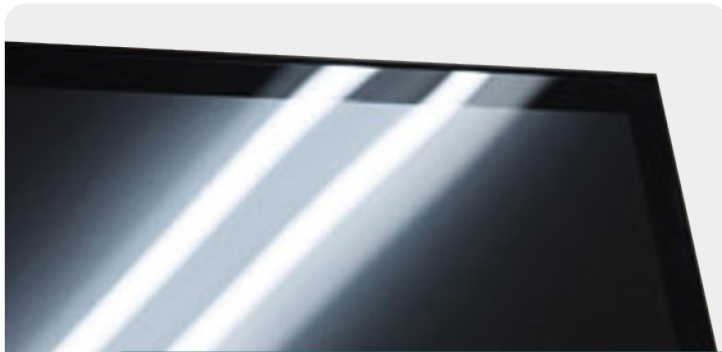


Better color quality

**16.7M Color Depth:**

8-bits per color channel: 28 = 256 gray values

Total colors: (256R) x (256G) x (256B) = 16.7 million colors



Anti-glare PCAP touchscreen Powered by General Touch, with IK07 Impact resistance provide flawless touch encounters and comfortable viewing experience.



Types of Anti-Corrosive Pigments:  
Safeguarding Surfaces with Innovation

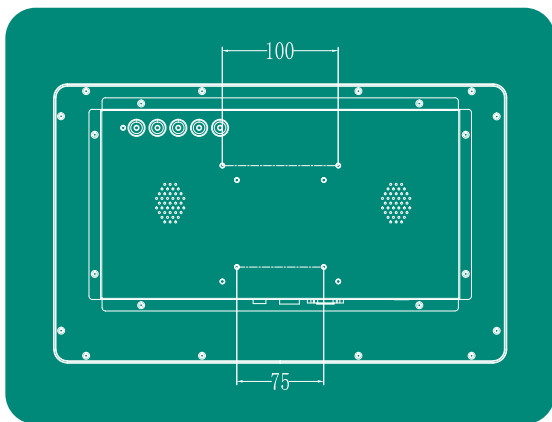
[www.generaltouch.com](http://www.generaltouch.com)

The anti-corrosion coated metal exterior can withstand regular disinfection procedures, keeping monitors in tip-top shape around hospital cleanliness protocols.

This closed frame with a modern and compact design comes with various mounting options that will easily adapt to diverse medical settings.

### Speaker, 2X 2W

Enhance your medical scenarios with displays that offer vivid, friendly voice capabilities. Enjoy the convenience of built-in speakers and transparent audio signals via HDMI cable for a simple, seamless experience.



Check out the following drawings. VESA holes (100\*100mm or 75\*75mm) offer various mounting configurations: On a stand, on an ergonomic manipulator arm, on the wall or floating mount (outside of a machine).

The OSD (On-Screen Display) offers configurability to seamlessly adjust to different deployment environments.

### Flexible Interface

Dual video interface

15.6": VGA, HDMI    21.5": VGA, HDMI or DP

Touch interface: USB-B



## Medical Grade Touchmonitor

More details about industrial production, please visit our website: [www.generaltouch.com](http://www.generaltouch.com)



Product Details