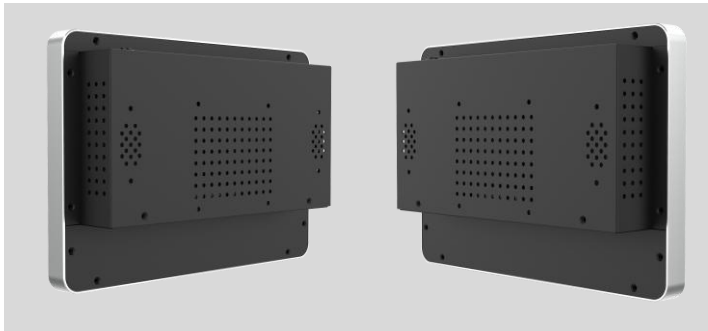


10 Inch

Closed Frame Windows AIO

CTL105



General Touch's breed of Closed Frame Touch computer is characterized by its unified design with AL Alloy frame edges. This sleek and sturdy contraption is loaded with enticing features and options that cater to different requirements including operating on Android, Windows and Linux platforms. The Android version is equipped with a Rockchip processor, while the Windows and Linux versions utilize powerful Intel processors.

Equipped with 10-point responsive PCAP Touch, several I/O interfaces and a high resolution display, connecting and adapting to other devices and peripherals is a breeze for applications in an assortment of scenarios. Also, a Closed frame design has the standard mounting options such as floating or standalone. Hence, GT's Closed frame Touch Computers are well positioned for use in kiosks, POS systems, financial services, self-service applications and information interactive displays.



Gaming



Kiosk



Vending Machine



Industrial Automation

- Support Windows, Linux, Android and mainstream OS
- AL Alloy frame, fashion and sturdy and durable
- General Touch PCAP technology, quality assurance
- VESA Mounting
- 43", 55" large size touch computer with OPS, support 4K solution
- Support customization and OEM/ODM
- Closed frame, compatible with various application

SPECIFICATIONS

Product Name	10 Inch Closed Frame Windows AIO
Model	CTL105
Motherboard Parameters	

Processor	Intel® Celeron® Processor J6412
GPU	Intel® UHD Graphics for 10th Gen Intel® Processors, integrated in CPU
Memory	1 x DDR4 SO-DIMM Slot, up to 32GB
Storage	1 x M.2 Interface
OS Support	Windows 10/Windows11/Linux (Note 1)
Wi-Fi & Bluetooth	Mini PCI-e Module, optional (Note 2)
4G LTE	Mini PCI-e Module, optional (Note 2)

LCD Panel Parameters

Display Technology	Active Matrix TFT-LCD with LED Backlight	
Aspect Ratio	16:10	
Active Display Area (W x H)	216.96 mm x 135.60 mm	
Native Resolution	1280 x 800	
Response Time (Typ.)	30ms	
Display Colors	262k	
Luminance (Typ.)	400nits	
Contrast Ratio (Typ.)	900:1	
Viewing Angle (Typ.)	Horizontal (Left/Right) CR≥10	170° (85°/85°)
	Vertical (Up/Down) CR≥10	170° (85°/85°)

Touchscreen Parameters

Touch Technology	PCAP
Touch Point	10
Light Transmission	≥85%
Thickness	2.8mm ± 0.2mm

I/O Port	
LAN	2 x RJ45 (10/100/1000Mbps)
USB	4 x USB 3.0 (Type-A)
Display	1 x HDMI out
Audio	1 x 3.5mm Line-out/Mic 2 in 1
Antenna	1 x SMA-K, available on Wi-Fi & Bluetooth or 4G LTE model
Power	1 x DC Jack (Pin Outer Diameter 2.5mm, optional)

Overall Parameters	
Bezel/Case Colour	Silver/Black
Mounting Options	VESA 75mm x 75mm
Outline Dimensions	261.3mm x 179.3mm x 52.0mm (W x H x D)
Speaker	2 x 2W Built-in, optional
Power Consumption	28W Max
Operating Altitude	≤3000m
Temperature	Operating: 0°C to 40°C, storage: -20°C to 60°C
Humidity (Non-condensing)	Operating: 20% to 80%, storage: 10% to 90%
Carton Dimensions	441mm x 370mm x 178mm (W x H x D)
Weight	TBD
MTBF	50,000 Hours Demonstrated
Agency Approvals	CE, FCC
Warranty	2 years

Note 1: The default operating system is Windows 10 IoT Enterprise x64, and Microsoft® Product Key is an optional order accessory.

Note 2: There is only 1 Mini PCI-e slot for Wi-Fi & BT 2-in-1 module or 4G LTE module installation.

Ordering Information		
Part Name	Part Number	Description
CTL105-RCB-0B00-A0D-1.0	10302020075R	8GB RAM, 128GB mSATA SSD, 2 x 2W Built-in Speakers
Optional Accessories		
Part Name	Part Number	Description
US Power Cable	30301010010R	1.5m
EU Power Cable	30301010011R	1.5m
UK Power Cable	30301010018R	1.5m
Power Adapter	30207010005R	Input Voltage Range: 100V - 240V AC Output : 12V DC \pm 5%/4.17A DC Barrel Plug Pin Inner Diameter: 2.5mm

Go to www.generaltouch.com for more products and information, or contact us.

General Touch Co., Ltd. reserves the right to change or update, without notice, any information contained herein; to change, without notice, the design, construction, materials, processing or specifications of any products; and to discontinue or limit production or distribution of any products.

Tel: 0086-28-85124120

Fax: 0086-28-85124115

E-mail: info@generaltouch.com

<http://www.generaltouch.com>