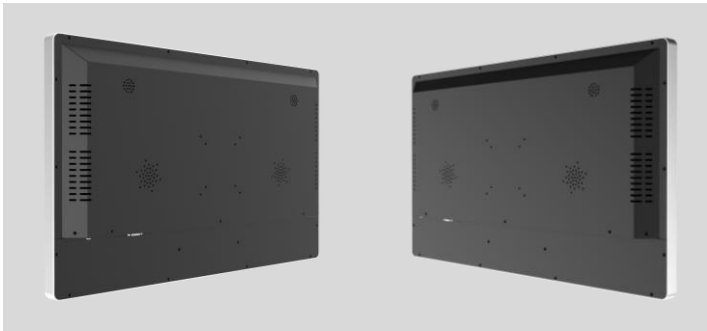


27 Inch

Closed Frame Windows AIO

CTL275



General Touch's breed of Closed Frame Touch computer is characterized by its unified design with AL Alloy frame edges. This sleek and sturdy contraption is loaded with enticing features and options that cater to different requirements including operating on Android, Windows and Linux platforms. The Android version is equipped with a Rockchip processor, while the Windows and Linux versions utilize powerful Intel processors.

Equipped with 10-point responsive PCAP Touch, several I/O interfaces and a high resolution display, connecting and adapting to other devices and peripherals is a breeze for applications in an assortment of scenarios. Also, a Closed frame design has the standard mounting options such as floating or standalone. Hence, GT's Closed frame Touch Computers are well positioned for use in kiosks, POS systems, financial services, self-service applications and information interactive displays.



Gaming



Kiosk



Vending Machine



Industrial Automation

- Support Windows, Linux, Android and mainstream OS
- AL Alloy frame, fashion and sturdy and durable
- General Touch PCAP technology, quality assurance
- VESA Mounting
- 43", 55" large size touch computer with OPS, support 4K solution
- Support customization and OEM/ODM
- Closed frame, compatible with various application

SPECIFICATIONS

Product Name	27 Inch Closed Frame Windows AIO
Model	CTL275
Motherboard Parameters	

Processor	5th Generation Intel® Core™ i5 Mobile Dual-Core CPU
GPU	Intel® HD Graphics 5500, integrated in CPU
Memory	1 x SO-DIMM Slot, up to 8GB
Storage	1 x mSATA Interface, 2 x SATA Interfaces
OS Support	Windows 7/ Windows 8/ Windows 10/ Linux (Note 1)
Wi-Fi & Bluetooth	Mini PCI-e Module, optional (Note 2)
4G LTE	Mini PCI-e Module, optional (Note 2)

LCD Panel Parameters

Display Technology	Active Matrix TFT-LCD with LED Backlight	
Aspect Ratio	16:9	
Active Display Area (W x H)	597.60mm x 336.15mm	
Native Resolution	1920 x 1080	
Response Time (Typ.)	12ms	
Display Colors	16.7M	
Luminance (Typ.)	300nits	
Contrast Ratio (Typ.)	3000:1	
Viewing Angle (Typ.)	Horizontal (Left/Right) CR≥10	178° (89°/89°)
	Vertical (Up/Down) CR≥10	178° (89°/89°)

Touchscreen Parameters

Touch Technology	PCAP
Touch Point	10
Light Transmission	≥83%
Thickness	4.3mm ± 0.3mm

I/O Port	
LAN	1 x RJ45 (10/100/1000Mbps)
USB	2 x USB 2.0 (Type-A), 2 x USB 3.0 (Type-A)
Display	1 x VGA out, 1 x HDMI out
Audio	1 x 3.5mm Line out, 1 x 3.5mm Mic in
Antenna	1 x SMA-K, available on Wi-Fi & Bluetooth or 4G LTE model
Power	1 x DC Jack (Pin Outer Diameter 2.5mm, optional)

Overall Parameters	
Bezel/Case Colour	Silver/Black
Mounting Options	VESA 75mm x 75mm, 100mm x 100mm
Outline Dimensions	658.7mm x 399.4mm x 52.0mm (W x H x D)
Input Voltage Range	12V DC \pm 5%
Speaker	2 x 2W Built-in, optional
Power Consumption	99W Max
Operating Altitude	\leq 3000m
Temperature	Operating: 0°C to 40°C, storage: -20°C to 60°C
Humidity (Non-condensing)	Operating: 20% to 80%, storage: 10% to 90%
Carton Dimensions	TBD
Weight	TBD
MTBF	50,000 Hours Demonstrated
Agency Approvals	TBD
Warranty	2 years

Note 1: The default operating system is Windows 10 IoT Enterprise x64, and Microsoft® Product Key is an optional accessory.

Note 2: There is only 1 Mini PCI-e slot for Wi-Fi & BT 2-in-1 module or 4G LTE module installation.

Ordering Information		
Part Name	Part Number	Description
CTL275-RCP-0B00-A0D-1.0	10302020021R	8GB RAM, 128GB mSATA SSD, 2 x 2W Built-in Speakers
CTL275-RCP-2B00-A0D-1.0	10302020039R	8GB RAM, 128GB mSATA SSD, 2 x 2W Built-in Speakers,Wi-Fi&BT 2 in 1 Module

Optional Accessories		
Part Name	Part Number	Description
Microsoft® Product Key	30208180003R	Windows 10 IoT Enterprise (OEM)
US Power Cable	30301010010R	1.5m
EU Power Cable	30301010011R	1.5m
UK Power Cable	30301010018R	1.5m
Power Adapter	30207010006R	Input Voltage Range: 100V - 240V AC Output : 12V DC ± 5%/7.5A DC Barrel Plug Pin Inner Diameter: 2.5mm

Go to www.generaltouch.com for more products and information, or contact us.

General Touch Co., Ltd. reserves the right to change or update, without notice, any information contained herein; to change, without notice, the design, construction, materials, processing or specifications of any products; and to discontinue or limit production or distribution of any products.

Tel: 0086-28-85124120

Fax: 0086-28-85124115

E-mail: info@generaltouch.com

<http://www.generaltouch.com>