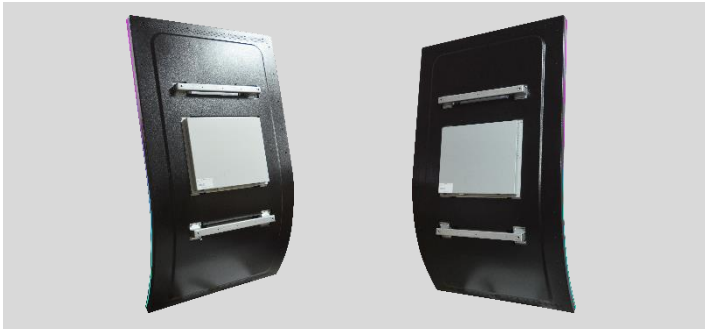


**55 Inch****Curved Touchmonitor****OTJ557**

The novelty of curved touchmonitors brings an air of mystique to the display market. When LED-Framed lights are added, it easily becomes the prima donna of touch displays. General Touch mass produces these curved beauties in-house and they come in C, J or S curve-types with the classic curvature radius of R1500 in sizes ranging from 23.6 to 55 inches. To date, the 55 inch J-type has attained a breakthrough curvature radius of R800.

The large-sized 43-55 inch portrait curved touch screen provides an immersive and expansive user experience from top to bottom in diverse gaming and interactive scenarios. The medium-sized 23.6-32 inch landscape curved touch screen design is based on user-centered ergonomics, reducing fatigue in the human-computer interaction process, allowing users to play longer, fuller and happier.

General Touch offers both the Open Frame and Closed Frame curved displays. For a flushing appearance when integrated into a cabinet, the Open Frame is the straightforward choice. The Closed Frame allows the display to float on the surface of the cabinet though VESA and hinge mounting options, adding a tinge look of sophistication. When combined with Halo/Edge/Front LED-Framed lights, the curved display looks like it is dancing rhythmically. If a Closed Frame is in floating mount, adding rear LED lights would produce a silhouette effect.

**Gaming****Kiosk****Vending Machine**

- Curved shape, J design, unique and interactive motivation
- No hot spot, dark spot, dark corner, high level uniformity
- 4K resolution
- PCAP powered by General Touch, quality assurance
- Plastic back cover, light and cost saving
- Well sealed non LED light leakage
- Closed frame, compatible with various application

## SPECIFICATIONS

Product Name	55 Inch Curved Touchmonitor
Model	OTJ557
<b>LCD Panel Parameters</b>	
Display Technology	Active Matrix TFT-LCD with LED Backlight
Aspect Ratio	16:9
Active Area (W x H)	1209.6mm × 680.4mm
Native Resolution	3840 × 2160 @ 60Hz
Response Time (Typ.)	8ms
Display Colors	1.07B
Luminance (Typ.)	500nits
Contrast Ratio (Typ.)	4000:1
Viewing Angle (Typ.)	Horizontal: CR≥10 89°/89°    Vertical: CR≥10 89°/89°
<b>Touch Screen Parameters</b>	
Touch Technology	PCAP
Surface Treatment	Tempered
Thickness (Total)	4.5mm
Light Transmission	≥ 83%
Response Time (Typ.)	10ms
Touch Screen Interface	USB
Touch Point	10
<b>Overall Parameters</b>	
Case/Bezel Color	Black
Mounting Options	VESA: 600mm × 400mm
Outline Dimensions (W×H×D)	748.0mm × 1235.7mm × 311.1mm, curvature radius 792.3mm
Power Supply	Input Voltage Range: Monitor: +24 VDC ± 5%, 4 PIN plug or 6 PIN mating Molex 3901-2060 RGB LED Lights: +12VDC ± 5%, mating Molex 43025-0600 Optional LED controller (External): +12VDC ± 5%, Coaxial power jack 2.5mm pin outer diameter
On Screen Display (OSD)	Control (External): Power, Auto, Up, Down, Menu
Power Consumption (Max.)	150W (Monitor without RGB LED Lights) 40W (RGB LED Lights)
Operating Altitude	≤ 3000m
Temperature Range	Operating: 0°C to 40°C, storage: -20°C to 60°C
Humidity (Non Condensing)	Operating: 20% to 80%, storage: 10% to 90%
I/O	DVI, HDMI, DP, USB (Type B)
Accessories	Cables: USB × 1, 1.5m Length

Carton Box Dimensions	1435mm (L) × 420mm (W) × 910mm (H), 1 unit in one carton
Weight	Net: 34kg, Gross: 42kg
MTBF	50,000 hours demonstrated
LED Lights Color	Multicolor
LED Lights Location	4 LED lights bar (Front, Edge)
LED Controller (External)	Optional
Agency Approvals	CE, FCC
Warranty	1 year

Ordering Information		
Model	Part Number	Description
OTJ557-RC5000-UD5450-1.0	10202020003R	55" "J type", 800R, UHD, 16:9, 500nits, PCAP, USB, HDMI/DVI/DP, LED lights, front, edge

Optional Accessories		
Model	Part Number	Description
DVI Cable	30302020002R	DVI Cable Male-Male 18+1 1500 mm
HDMI Cable	30302030001R	HDMI Cable Male-Male 1500 mm
DP Cable	30302010001R	DP Cable Male-Male 1500 mm
LED Controller Kit	20701040010R	12 V / 50 W Addressable LED Controller Kit
Adaptor	30207010024R	Power Adaptor 24 V / 150 W / 4 Pin / 1200 mm
Power Cable	30301010018R	UK
	30301010011R	EU
	30301010010R	US

Go to [www.generaltouch.com](http://www.generaltouch.com) for more products and information, or contact us.

General Touch Co., Ltd. reserves the right to change or update, without notice, any information contained herein; to change, without notice, the design, construction, materials, processing or specifications of any products; and to discontinue or limit production or distribution of any products.

Tel: 0086-28-85124120

Fax: 0086-28-85124115

E-mail: [info@generaltouch.com](mailto:info@generaltouch.com)

<http://www.generaltouch.com>