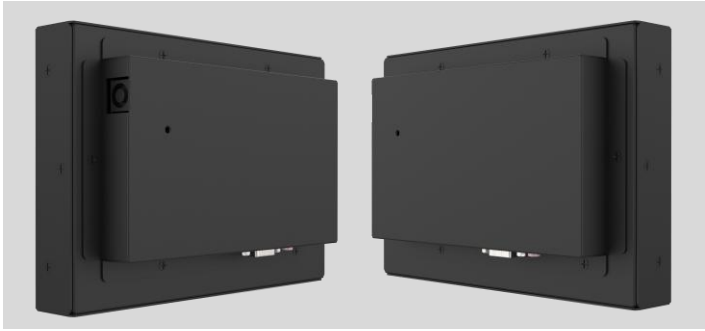


7 Inch

Open Frame Touchmonitor

OTL073



For touchmonitors which will be housed in cabinets, the premier choice is the open frame PCAP series. Over the last twenty years, General Touch's open framed touchmonitors have gone through progressive transformation in order to keep up with advancing technology and market expectations. As industrial components are used, this series is taking the 'High Road', namely High Resolution, High Brightness, High Performance, High Reliability. In short, it is a High Grade touchmonitor that could withstand long time continual operation. With a 3-year warranty and sizes ranging 7-43 inches, General Touch's PCAP Open Framed touchmonitors have been widely adopted in retail, gaming, self-service, finance, transportation, conference, education and other industries.



Gaming



Kiosk



Vending Machine



Industrial Automation

- Open frame, with Industry quality and long lifespan
- General Touch PCAP technology, quality assurance
- Range size from 7 inch to 43 inch, one stop for you
- Industrial-grade raw materials, better for industry
- 3 years warranty
- Edge-to-edge after assembly, maintenance free

SPECIFICATIONS

Name	7 Inch Open Frame Touchmonitor
Model	OTL073
LCD Panel Parameters	
Display Technology	Active Matrix TFT-LCD With LED Backlight
Aspect Ratio	16:10
Active Area (W x H)	149.76mm × 93.60mm
Native Resolution	1280 × 800 @ 60Hz
Response Time (Typ.)	35ms
Display Colors	16.7million
Luminance (Typ.)	400nits, with PCAP 332nits
Contrast Ratio (Typ.)	800:1
Viewing Angle (Typ.)	Horizontal (Left/Right) CR≥10 88° /88° Vertical (Up/Down) CR≥10 88° /88°
Touch Screen Parameters	
Touch Technology	PCAP
Surface Treatment	Strengthened Optional: Anti-Glare
Active Area(W x H)	151.76mm × 95.60mm ± 0.3mm
Thickness(Total)	2.8mm ± 0.3mm
Light Transmission	≥83%
Response Time	10ms
Touch Screen Interface	USB
Touch Point	10
Overall Parameters	
Case/Bezel Color	Black
Mounting Options	VESA: Side mount
Outline Dimensions (W×H×D)	190.60mm × 154.60mm × 48.0mm
Power Supply	Input Voltage Range: +12VDC ± 5%, Coaxial power jack 2.5mm pin outer diameter
On Screen Display (OSD)	Control (Back): Power, Auto, Up, Down, Menu
Power Consumption	MAX: 14W
Speaker	Optional

Operating Altitude	≤3000m
Temperature Range	Operating: 0°C to 40°C, Storage: -20°C to 60°C
Humidity (Non Condensing)	Operating: 20% to 80%, Storage: 10% to 90%
I/O	VGA, HDMI, USB (Type B, For Touch)
Accessories	Cables: VGA×1, USB×1, 1.5m Length
Carton Box Dimensions	380mm (L) × 280mm (W) × 144mm (H)
Weight	Net: 1.46kg, Gross: 2.6kg
MTBF	50,000 hours demonstrated
Agency Approvals	CE, FCC
Warranty	3 years

Ordering Information

Model	Part Number	Description
OTL073-RC3000-UH4A00-1.0	10202010413R	7", 16:10, 400nits, PCAP, USB, VGA & HDMI, Black

Contact sales for other options

Optional Accessories

Model	Part Number	Description
Adapter	30207010005R	12V/4.17A, DC Cable: 1500mm, DC barrel plug 2.5mm pin inner diameter
	30301010018R	UK
Power Cable	30301010011R	EU 1500mm
	30301010010R	US
HDMI Cable	30302030001R	1500mm

Go to www.generaltouch.com for more products and information, or contact us.

General Touch Co., Ltd. reserves the right to change or update, without notice, any information contained herein; to change, without notice, the design, construction, materials, processing or specifications of any products; and to discontinue or limit production or distribution of any products.

Tel: 0086-28-85124120

Fax: 0086-28-85124115

E-mail: info@generaltouch.com

<http://www.generaltouch.com>