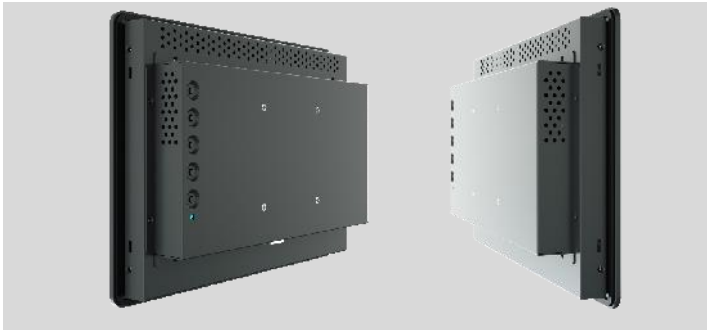


10 Inch

Panel Mount Touchmonitor

PTL103



Panel Mount has been a mainstay in some circles that need to minimize manpower overheads during installation and to enhance maintenance efficiency throughout the operation. In order to fulfill this need, GT has designed the panel mount touchmonitor that only requires small brackets with fastening screws for quick and easy mounting onto an enclosure.

For operating in harsher environments, GT's Panel Mount touchmonitors utilize Aluminum alloy front frame which makes the unit impervious to dust, moisture, vibrations and wide temperature fluctuations. Furthermore, the front of this touchmonitor is rated of IP65 (front surface) and IK07. The touchscreen can also be operated with gloved fingers which is useful in certain environments such as factories. Other stringent requirements like wide-range operating temperature (-20~60°C) and wide DC input range (9V~36V) could be opted for some display model.

General Touch meticulously produces its own touchmonitors that are comprehensively tested. Hence, its products facilitate 24/7 and maintenance-free operation. The GT Panel Mount touchmonitors are well suited for: factory automation, Retail, Kiosk, Smart warehouse, transportation, bank services and the like.



Banking Service



Kiosk



Retail



Factory Automation



Smart Warehouse



Transportation

- Aluminum alloy brushing front frame
- Panel Mount & VESA installation method
- Front IP65 and IK07 tested
- Industrial-grade raw materials, better for industry
- Touch operable with gloves powered by GeneralTouch
- -20° C ~ +60° C wide range operating temperature
- 9V~36V wide voltage input range
- Available size range from 10.1", 15". And 15.6" and 21.5" coming soon.

SPECIFICATIONS

Name	10 Inch Panel Mount Touchmonitor
Model	PTL103
LCD Panel Parameters	
Display Technology	Active Matrix TFT-LCD With LED Backlight
Aspect Ratio	16:10
Active Area (W x H)	216.96mm × 135.6mm
Native Resolution	1280×800@60Hz
Response Time (Typ.)	30ms
Display Colors	16.2million
Luminance (Typ.)	400nits, with PCAP 332nits
Contrast Ratio (Typ.)	900:1
Viewing Angle (Typ.)	Horizontal (Left/Right) CR≥10 85°/85° Vertical (Up/Down) CR≥10 85°/85°
Touch Screen Parameters	
Touch Technology	PCAP
Surface Treatment	Strengthened Optional: Anti-Glare
Active Area(W x H)	218mm × 136.6mm±0.3mm
Thickness(Total)	3.4mm±0.3mm
Light Transmission	≥85%
Response Time	10ms
Touch Screen Interface	USB
Touch Point	10
Overall Parameters	
Case/Bezel Color	Black
Mounting Options	VESA: 75mm × 75mm, Panel Mount
Outline Dimensions (W×H×D)	286.2mm × 204.8mm × 54.2mm
Power Supply	Input Voltage Range: DC 9V ~ 36V, 1 x DC Jack (Pin Outer Diameter 2.5mm), 1 x 3-Pin Terminal Block, See the drawing
On Screen Display (OSD)	Control (Back): Power, Auto, Up, Down, Menu
Power Consumption	MAX: 7W
Speaker	Optional
IP Level	Front Panel IP65

Operating Altitude	≤3000m
Temperature Range	Operating: -20°C to 60°C, Storage: -20°C to 70°C
Humidity (Non Condensing)	Operating: 20% to 80%, Storage: 10% to 90%
I/O	VGA, DP, USB (Type B, For Touch)
Accessories	Cables: VGA×1, USB×1, 1.5m Length, Clamps × 8
Carton Box Dimensions	380mm (L) × 350mm (W) × 365mm (H), 4 units in one carton
Weight	Net: TBD, Gross: TBD
MTBF	50,000 hours demonstrated
Agency Approvals	CCC, CE, FCC
Warranty	3 years

Ordering Information

Model	Part Number	Description
PTL103-RC4W00-UP4A00-1.0	10202010697R	10", 16:10, 400nits, P-Cap, USB, VGA & DP, Black, IP65 Front

Contact sales for other options

Optional Accessories

Model	Part Number	Description
Adapter	30207010005R	12V/4.17A, DC Cable: 1500mm, DC barrel plug 2.5mm pin inner diameter
	30301010018R	UK
Power Cable	30301010011R	EU 1500mm
	30301010010R	US
DP Cable	30302010001R	1500mm

Go to www.generaltouch.com for more products and information, or contact us.

General Touch Co., Ltd. reserves the right to change or update, without notice, any information contained herein; to change, without notice, the design, construction, materials, processing or specifications of any products; and to discontinue or limit production or distribution of any products.

Tel: 0086-28-85124120

Fax: 0086-28-85124115

E-mail: info@generaltouch.com

<http://www.generaltouch.com>