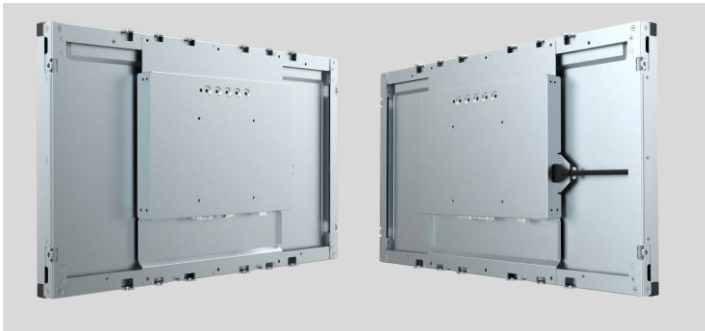


21.5 Inch

Rear Mount SAW Touchmonitor

RTL22W



The General Touch Rear Mount Surface Acoustic Wave (SAW) Touchmonitor with CCC, CE and FCC certifications is a low-cost and durable touch solution. Its extended lifecycle is evidenced from years of continued field operations beyond its warranty period. The SAW touchscreens produced by General Touch are protected by international and domestic patents, and they offer accurate touches, drift-free operation, and low power consumption, with anti-glare as an option.

With flexible installation options and adjustable mounting brackets, it can be seamlessly integrated into existing systems or equipments. Available in sizes ranging from 15 to 32 inches, these no frills SAW touchmonitors are a practical choice for various public applications, including self-service terminals, financial instruments, rail transit, industrial control, and interactive digital signage.



Kiosk



Vending
Machine



Industrial
Automation

- In-house SAW touch technology, meet rich customization requirements
- Vandal-proof or Anti-glare optional, adapt to complex environments
- Flexible installation options and adjustable mounting brackets, easy integration and low maintenance
- Low power consumption
- Comply with CCC, CE and FCC certifications
- Available in a range of sizes from 15 to 32 inches
- A 3-year warranty guarantees an enduring lifecycle

SPECIFICATIONS

Product Name	21.5 Inch Rear Mount SAW Touchmonitor
Model	RTL22W
LCD Panel Parameters	
Display Technology	Active Matrix TFT-LCD with LED Backlight
Aspect Ratio	16:9
Active Area (W x H)	476.640mm × 268.11mm
Native Resolution	1920 × 1080 @ 60Hz
Response Time (Typ.)	18ms
Display Colors	16.7 million
Luminance (Typ.)	250nits; with SAW 225nits
Contrast Ratio (Typ.)	3000:1
Viewing Angle (Typ.)	Horizontal (left/right) CR≥10 89° /89°
	Vertical (up/down) CR≥10 89° /89°
Touch Screen Parameters	
Touch Technology	SAW
Surface Treatment	Optional: Anti-glare
Active Area	476.640mm × 268.11mm
Thickness(Total)	4.00 ± 0.2mm
Light Transmission	≥90%
Response Time	10.4ms
Touch Screen Interface	USB / RS232
Touch Point	1
Overall Parameters	
Case/Bezel Color	Gray
Mounting Options	Side Mounting, VESA:100 × 100mm
Outline Dimensions (W × H × D)	511.70mm × 298.10mm × 44.50mm
Power Supply	Input Voltage Range: +12V DC ± 5%, Coaxial power jack 2.5mm pin outer diameter
On Screen Display (OSD)	Control (back): Power, Auto, Up, Down, Menu
Power Consumption	MAX: 35W
Operating Altitude	≦3000m

Temperature Range	Operating: 0℃ to 40℃, storage: -20℃ to 60℃
Humidity (Non Condensing)	Operating: 20% to 80%, storage: 10% to 90%
I/O	VGA, DVI, USB (Type B) , RS232
Accessories	Cables: VGA×1, USB×1, 1.5m Length
Carton Box Dimensions (1 unit in one carton)	620mm×400mm×200mm
Weight	Gross: 11kg, Net: 9kg
MTBF	50,000 hours demonstrated
Agency Approvals	CCC, CE , FCC
Warranty	3 years

Ordering Information		
Model	Part Number	Description
RTL22W-R04-SUCDA	10201010001R	21.5", 16:9, 250nits, SAW, USB & RS232, VGA/DVI

Optional Accessories		
Model	Part Number	Description
DVI Cable	30302020002R	DVI Cable length 1500mm 18+1pin male to male
RS232 Cable	30302060007R	RS232 Cable CCS175A-APT12
Power Adapter	30207010005R	Power Adapter 12V/50W/2.5mm/1500mm
Power Cord	30301010010R	US
	30301010011R	EU 1500mm
	30301010018R	UK

Go to www.generaltouch.com for more products and information, or contact us.

General Touch Co., Ltd. reserves the right to change or update, without notice, any information contained herein; to change, without notice, the design, construction, materials, processing or specifications of any products; and to discontinue or limit production or distribution of any products.

Tel: 0086-28-85124120

Fax: 0086-28-85124115

E-mail: info@generaltouch.com

<http://www.generaltouch.com>